

WELCOME TO HILLINGDON CHAMBER OF COMMERCE

MEMBERSHIP OFFERING



FROM THE CEO'S DESK

Our Chamber is not just a network, we are here to witness your journey and to actively support you in taking your business forward. Membership with us is more than a badge; it's a gateway to tap into a reservoir of experience and skills, collective wisdom of our members, advocacy that gives voice to your interests and innovative programs that fuel business growth and stability.



Joining the Hillingdon Chamber of Commerce means you're never alone on your business journey. We understand the grit required to thrive and are dedicated to lightening that load, turning challenges into opportunities and aspirations into achievements.

Together, let us continue to create a business environment in Hillingdon that is as resilient as it is prosperous. Let us be the catalyst for your growth and the advocate for your interests.

As CEO, I extend a heartfelt welcome to each of you who form the backbone of our local economy. Join us and let's turn the tides of challenge into waves of success.

ANDY SHARMA

*Chief Executive Officer
Hillingdon Chamber of Commerce
andy@hillingtonchamber.co.uk*

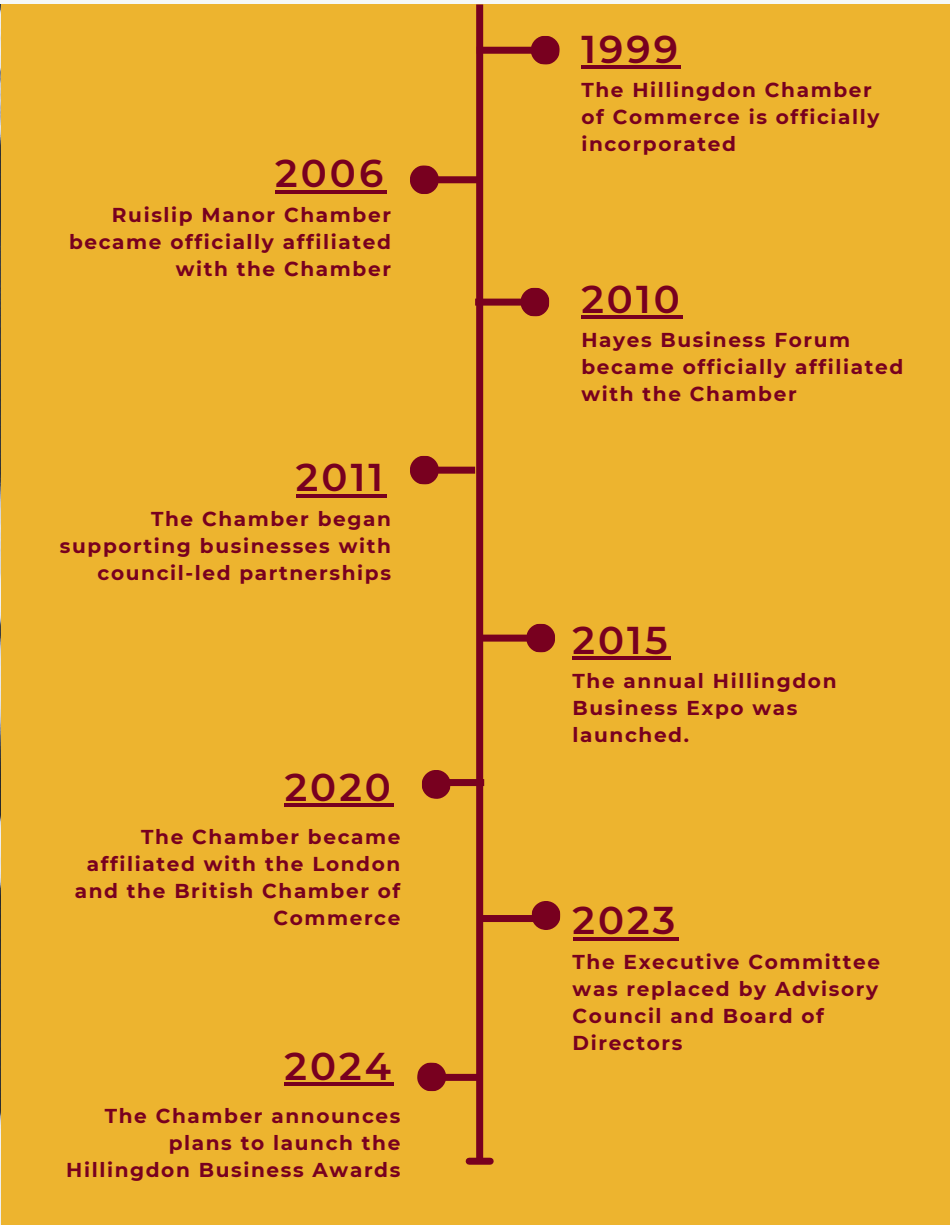
“ IN TODAY'S WORLD OF BUSINESS, WHERE EVERY STEP FORWARD IS HARD-EARNED, THE HILLINGDON CHAMBER OF COMMERCE STANDS READY AS YOUR PARTNER IN THIS JOURNEY.

THE HILLINGDON CHAMBER OF COMMERCE IS A DYNAMIC COMMUNITY OF BUSINESSES, LARGE AND SMALL, GEARED TO HELP YOU MEET THESE CHALLENGES HEAD-ON THROUGH OPPORTUNITIES TO CONNECT, GROW, DEVELOP, INFLUENCE, AND INSPIRE. ”



CHAMBER HISTORY

The origins of the Hillingdon Chamber of Commerce can be traced back to 1908 and the Chain of Office is kept in the archives at Uxbridge Library. The Chamber today has evolved into a professional organisation, working in the interests of the Hillingdon business community.



“ WE WORK IN THE INTEREST OF LOCAL BUSINESSES

Offering our members marketing exposure, professional services, opportunity to network through our events, seek advisory support and much more. ”

OUR GUIDING PRINCIPLES

WHAT DRIVES US:

Our goal is to build a thriving ecosystem in the London Borough of Hillingdon, that supports business growth, delivers high quality jobs, encourages businesses to innovate and adopt sustainable practices.

WE DO THIS BY:

- Supporting local businesses with knowledge, skills, and partnerships to grow profitably.
- Providing a platform for local businesses to engage with each other to create and share opportunities.
- Being the voice of the business community to influence the decisions and policies.
- Creating opportunities for businesses to get recognition for their successes, efforts, and initiatives.
- Aligning local skills improvement plans with the business needs to build a talented workforce for the future.
- Encouraging and supporting businesses to think about environmental impact and adopt sustainable practices.

RESULTING IN:

- Growth in economic activity.
- Easy to start and grow a business in the London Borough of Hillingdon.
- Improved engagement and partnerships amongst businesses.
- Increase in employment opportunities.
- Better skill pool to hire from.
- Higher % of Hillingdon based businesses on a pathway to net zero.

WE LIVE BY:

- **Integrity:** We will always speak the truth. What we promise is what we deliver. We will only ever make agreements that we are willing and intend to keep.
- **Excellence:** Good isn't enough. We will always deliver exceptional quality that adds value to all involved for the long term. We will stay on a path of constant and never-ending improvement and innovation.
- **Teamwork:** We will be willing to do whatever it takes to achieve team goals. We will focus on cooperation and always come to a resolution, not a compromise. We will ask for help when we need it and be compassionate to others who ask us for help.
- **Success:** We will focus our attention on the successful outcome of whatever we are doing. We will have a willingness to win and allow others to win ... win/win. We will display pride, prosperity, competence, and personal confidence.
- **Consistency:** We will be consistent in our actions so that our members, stakeholders and teammates can always feel comfortable in dealing with us.
- **Ownership:** We accept that as individuals we are truly responsible for our actions and outcomes and own everything that takes place in our work and our life.



CHAMBER OFFERINGS

Our membership packages are designed to fulfil the differing needs of all our local businesses. Members are supported by our Membership Team and the wider Chamber team, with key areas of support being:



WE'RE PART OF A POWERFUL NETWORK

When your business connects with the Chamber, your business gets access to a wider network, regional and national representation and a range of support and benefits.



The Hillingdon Chamber of Commerce is affiliated to the London Chamber of Commerce and Industry and the British Chambers of Commerce.

We believe that by working closely with our affiliated Chambers we can create a bigger impact to support the development of a thriving economy within the London Borough of Hillingdon.



MEMBERSHIP PACKAGES

CONNECT (0 - 3 STAFF)

Connect package is designed for businesses in their first 12 months of trading and provides support to the entrepreneur in getting the new venture off the ground.

You can make new connections, learn from other professionals and develop the skills needed to ensure your dream flourishes.

INVESTMENT
£95

GROW (4 - 10 STAFF)

Grow package is suitable for businesses looking to raise their profile and build their network to access growth opportunities.

We connect you with opportunities, expertise, networks and connections. We can cut your costs of doing business and provide hands on support to help you to grow.

INVESTMENT
£300

INFLUENCE (11 - 50 STAFF)

Influence membership is ideal for established, growing businesses who are keen to raise their profile and increase the opportunities to knowledge share.

Influence membership offers the chance to gain perspectives from and collaborate with other business leaders, build long lasting relationships and engage with the community.

INVESTMENT
£750

INSPIRE (50 - 250 STAFF)

Inspire membership is designed for larger employers, often recognised in the community, who are leaders and influencers in their fields.

Inspire members are seeking opportunities to champion real change, see value in collaborating with other Hillingdon businesses for the collective benefit of the Borough.

INVESTMENT
£3,500

PATRON 250+ STAFF

Patron membership is for real movers and shakers in the business, often global brands, who are keen to invest back in the community.

Patron members are interested in collaborating with other global players to maximise the power of the collective to support Hillingdon's socio-economic growth, skills development and sustainability.

INVESTMENT
£6,500

MEMBERSHIP BENEFITS



Build your Network and Grow

Membership Benefit	Connect	Grow	Influence	Inspire	Patron
Free access to 30+ events per year	X	X	X	X	X
Invitation only networking opportunities	X	X	X	X	X
Access to dedicated member's only LinkedIn groups	X	X	X	X	X
Access tender opportunities on HCC website	X	X	X	X	X
Dedicated members area on HCC website	X	X	X	X	X
Sponsor an HCC event to raise your profile, feature on event marketing	X	X	X	X	X
Priority allocation of exhibition stand at the Hillingdon Expo		X	X	X	X
Post tender opportunities on HCC website		X	X	X	X
Brokered introductions- Up to 2 per annum			X	X	X
1 free ticket to Annual Awards Gala Dinner				X	X
2 free ticket to Annual Awards Gala Dinner					X
Invitations to Annual Sponsor's Dinner				X	X
Brokered introductions- Up to 4 per annum				X	X
Brokered introductions- Up to 6 per annum					X



Professional Services

Save money through discounted business services: Utilities, broadband, printing, payment services etc *	+£20/yr	X	X	X	X
Access to discount portal to save money on shopping, leisure, gifts etc. *	+ £20/yr	X	X	X	X
Legal/HR/Insurance helplines to support your business needs *	X	X	X	X	X
Access advice and support for HCC Business Awards entry * ^	X	X	X	X	X
Access to Employee Assistance Programme for one member and their household *	X	X	X	X	X
Employee Assistance Programme for team members / employees		£55/Emp	£45/Emp	£40/Emp	£35/Emp
Discounted training for CSR accreditation for your business * ^		X	X	X	X
Post job opportunities on HCC website to recruit locally		X	X	X	X

*provided through third party

^extra costs may be involved



Marketing and Brand Building

Membership Benefit	Connect	Grow	Influence	Inspire	Patron
Share news, wins and other information via our e-newsletter and social media channels	X	X	X	X	X
Listing in the Membership Directory with a dedicated page for your business	X	X	X	X	X
Use of 'HCC Member' logo on your communications, e-signature, stationery etc.	X	X	X	X	X
Electronic Certificate of Membership	X	X	X	X	X
Opportunities to create and access member to member offers through website	X	X	X	X	X
Opportunity to create and access promotions for public on app*	X	X	X	X	X
Bespoke marketing to HCC members and supporter's network of 3,000+		X	X	X	X
Onsite marketing opportunities at the event			X	X	X
Publish Case studies and articles on our website ^			X	X	X
Framed Certificate of Membership				X	X
Award Success Stories				X	X
Featured as premium member on media platforms, newsletters and website				X	X
Annual themed hosted event					X

Knowledge Insights

Online business toolbox: Resource Hubb (advice on sales, marketing, finance, exporting, tendering etc.	X	X	X	X	X
Access business support for growth, strategy, funding, planning, net zero, sustainability etc.	X	X	X	X	X
Access the latest HCC policy highlights and insights across multiple channels and networks (HCC LinkedIn, e-newsletters, and special interest groups)	X	X	X	X	X

*provided through third party

^extra costs may be involved





Leadership

Membership Benefit	Connect	Grow	Influence	Inspire	Patron
Opportunity to be on the HCC Advisory Council, HCC Board, Ambassador Panel (by invitation only)	X	X	X	X	X
Invitation to HCC General Meeting- Voting rights	X	X	X	X	X
Contribute to Business Resource Hubb on a specialist subject area to raise your profile	X	X	X	X	X
HCC Leaders Action Group- Collaboration on (Recruitment & skills, Place & Identity, Net zero & Infrastructure, Innovation & Growth etc.) (Invitation only)		X	X	X	X
Positioning members as experts- potential for speaker and media opportunities			X	X	X
Strategic local development support			X	X	X
Post job opportunities on HCC website to recruit locally					X



Have Your Say

Contribute to 'London Quarterly Economic Survey'- London's largest independent business survey on economic climate and impact	X	X	X	X	X
Invitation to Policy events on specific topics and industries- Lobby government policies locally, regionally and at national level		X	X	X	X
Share your ESG/CSR initiatives through HCC e-newsletters, website and social media channels			X	X	X
Opportunities to join trade delegations and panels				X	X



*provided through third party

^extra costs may be involved

FREQUENTLY ASKED QUESTIONS

Can I upgrade my membership package at any point or do I have to wait until renewal? <i>You can upgrade your package at any time by contacting us through our website or email info@hillingdonchamber.co.uk</i>	01
How do I know what events are coming up? <i>All our events are on our website but we also send out a newsletter to all our members to keep them up to date with what's coming up. You can share this with your contacts and staff while also following us on social media.</i>	02
Who are the benefits for? <i>The benefits are for the named member however, the EAP and discount portal can be extended to your staff at a preferential rate.</i>	03
How do I include staff members in the benefits package? <i>You can do this if you are a Grow or Influence member at a reduced rate per employee. Members would need to provide the names and email addresses of employees they wish to add.</i>	04
Can members sponsor a Chamber event? <i>You can sponsor an event with Hillingdon Chamber of Commerce to raise your company profile and feature on the event marketing. Please contact the Chamber if you are interested.</i>	05
How can the staff access the various benefits? <i>Once payment has been taken and staff names/email addresses have been provided to the Chamber, Benefits Direct will then send a welcome pack to each staff member directly which outlines the access information and their password.</i>	06
Who can I contact if I need any support? <i>You can contact the Hillingdon Chamber of Commerce by phone: 01895 545940 or via email: info@hillingdonchamber.co.uk</i>	07



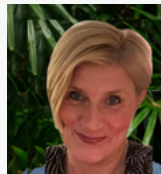
MEET YOUR CHAMBER TEAM



Andy Sharma
CEO
andy@hillingdonchamber.co.uk



Kim McGearty
Chamber Manager
kim@hillingdonchamber.co.uk



Jo Williams
Event Executive
jo@hillingdonchamber.co.uk

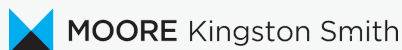


Honor Carrigan
Administrator
honor@hillingdonchamber.co.uk



Vaidehi Rawool
Marketing Intern
vaidehi@hillingdonchamber.co.uk

OUR PARTNERS





**WE BRING BUSINESSES TOGETHER
TO DO BUSINESS - DON'T JUST JOIN,
JOIN IN!**

5 HAYES BUSINESS STUDIOS, UXBRIDGE
COLLEGE, COLD HARBOUR LANE, HAYES
UB3 3BB

+44 (0) 1895 545 940
WWW.HILLINGDONCHAMBER.CO.UK
INFO@HILLINGDONCHAMBER.CO.UK



Hillingdon
Chamber of Commerce

Working in the interests of local business